



Online SAP ABAP Course Level 1

SAP PM Module

Plant maintenance

Step By Step 40 Hours, Practicing from

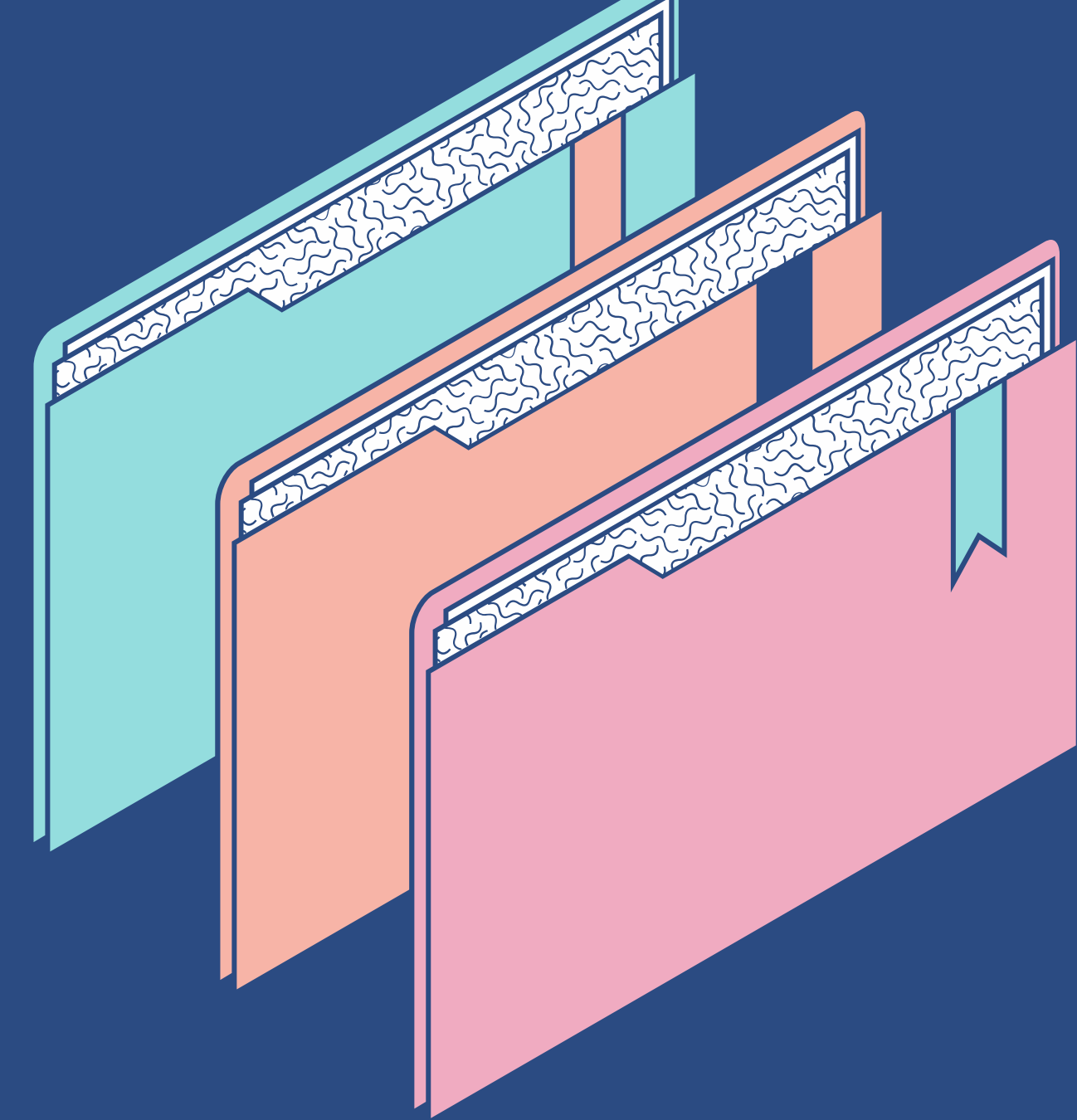
Course Content

1- introduction

- Introduction of planning and scheduling maintenance
- Introduction to ERP and CMMS
- Introduction of sap pm

2- Logon to sap pm module

- Sap system navigation



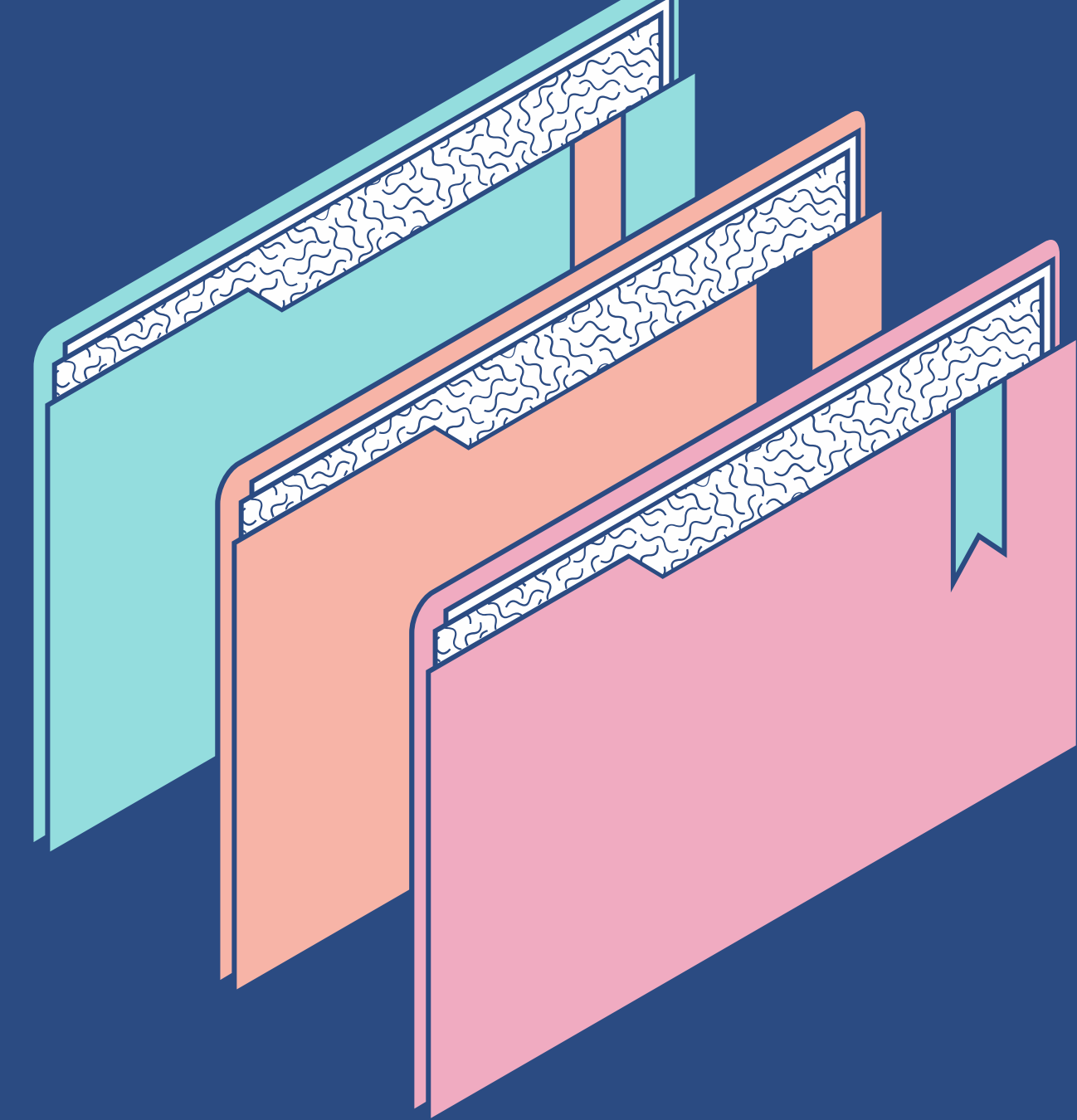
Course Content

3- Organizational structure in PM

- Maintenance plant
- Planning plant
- Planner group

4- Master data in PM

- Work center
- Functional location
- Equipment
- Bill of material (BOM)
- Characteristics and class
- Codes and catalogs
- Task list
- Measuring points and measuring counter
- Permits



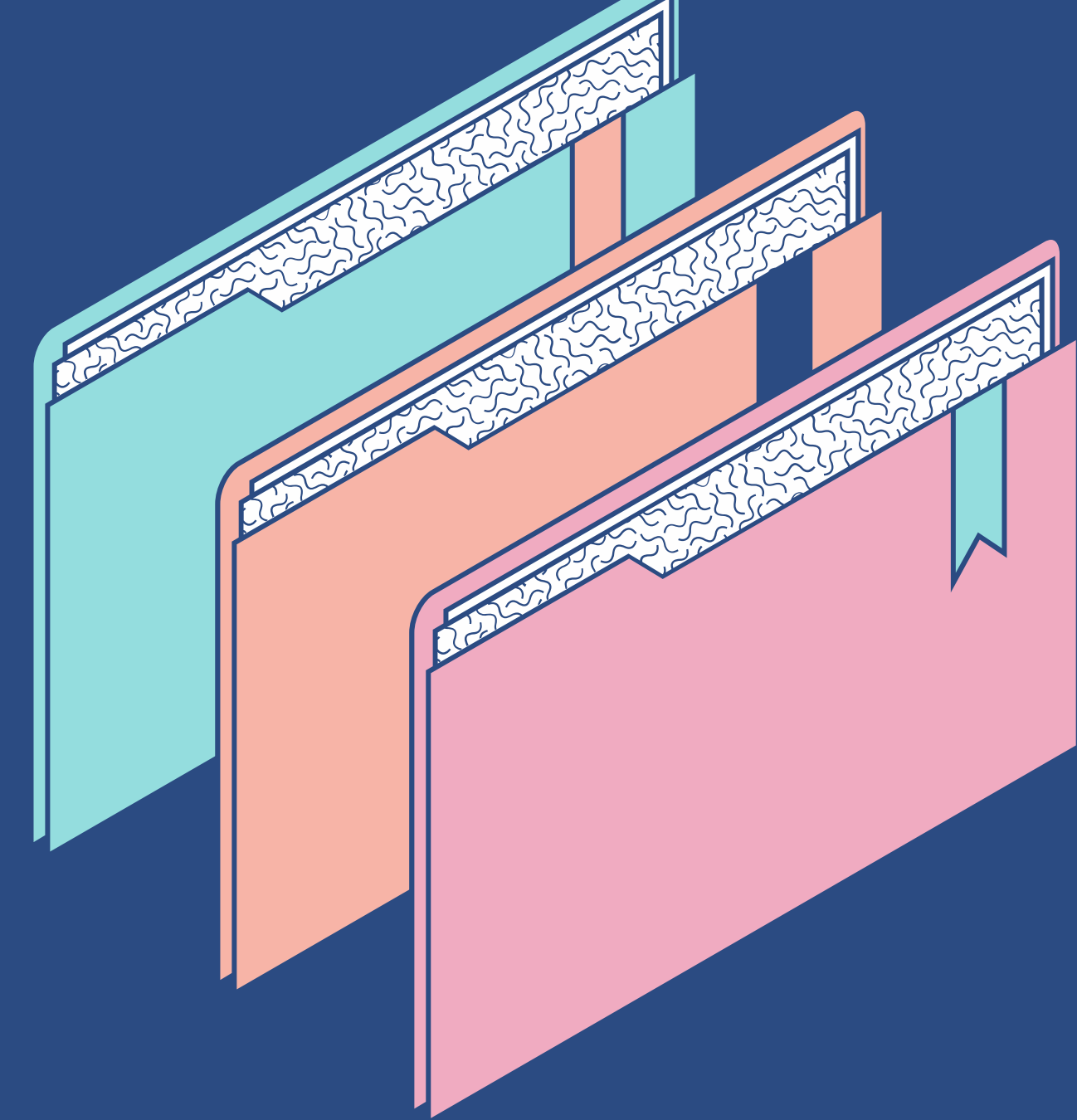
Course Content

5- Maintenance processing

- Corrective maintenance (PMCM)
- Preventive maintenance (PMPM)
- Shutdown maintenance (PMSH)
- Emergency maintenance (PMEM)

6- Maintenance processing of corrective maintenance execution

- Create pm notification
- Create work order from notification
- Release work order
- Change work order operation
- Assign material for maintenance operations
- Goods issue for the order

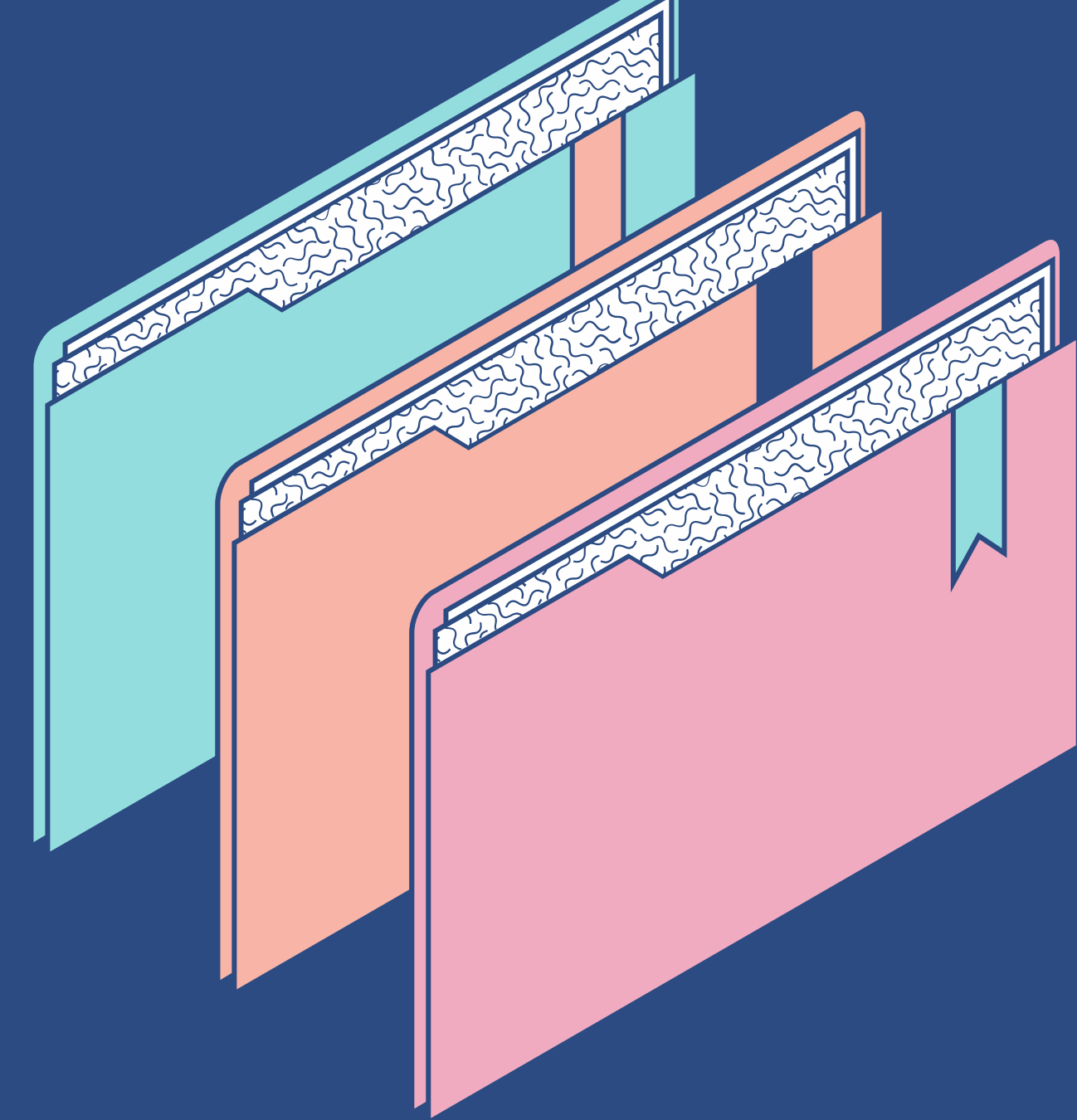


Course Content

- Assign task list for maintenance and insert operation
- Create Purchase Requisition material or service
- Confirmation of work order
- Inspection approved
- Complete technical
- Complete business

7- Maintenance processing of preventive maintenance execution

- Create maintenance strategy
- Create maintenance plan
- Preventive maintenance (time based single cycle)
- Preventive maintenance (strategy based)
- Preventive maintenance (cycle set)
- Schedule the maintenance plan

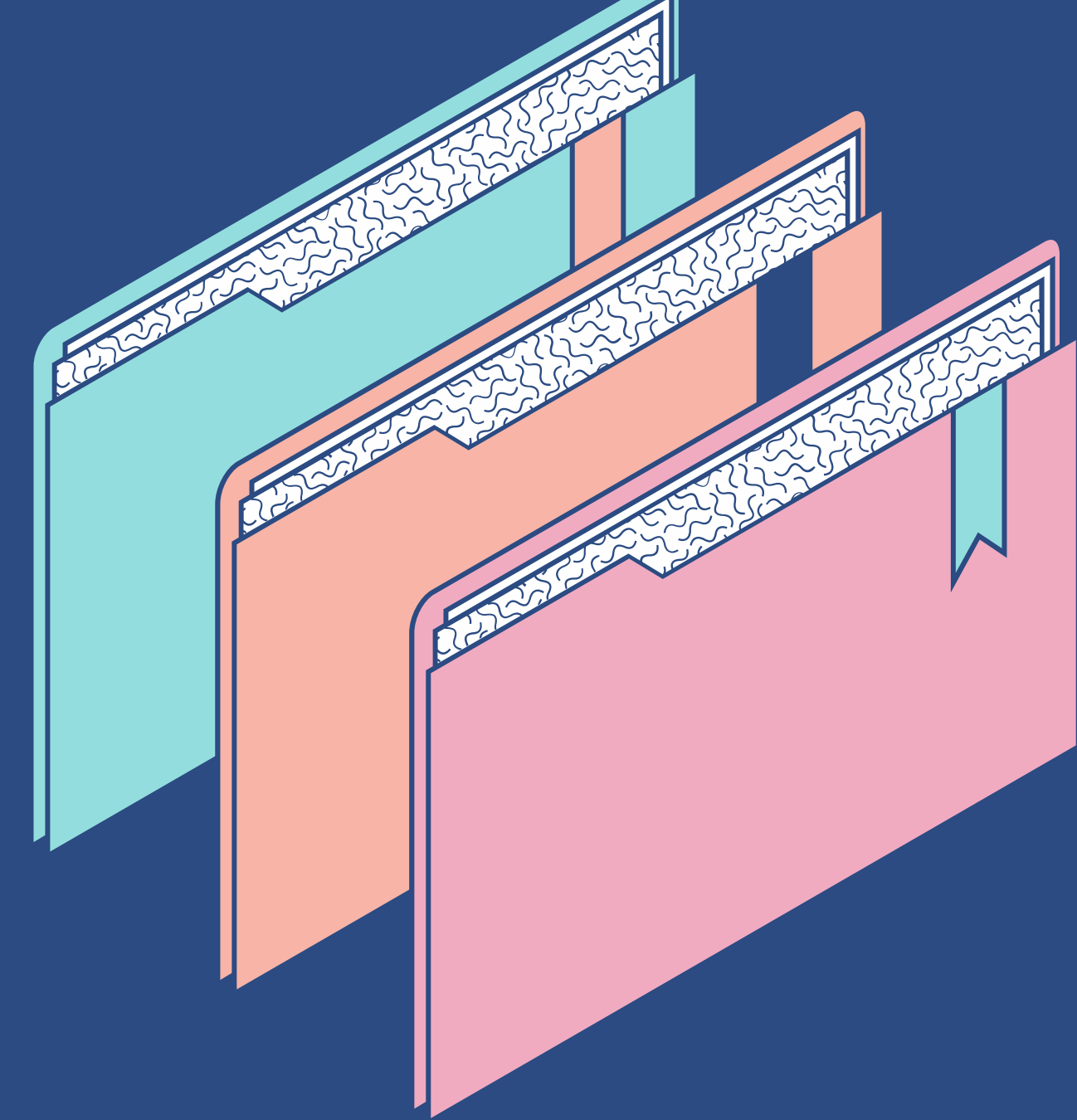


Course Content

- Calling the work order
- Release work order
- Create Purchase Requisition material or service before release the vorder
- Confirmation of work order
- Complete technical
- Complete business
- Deadline monitoring

8- Maintenance processing of refurbishment execution

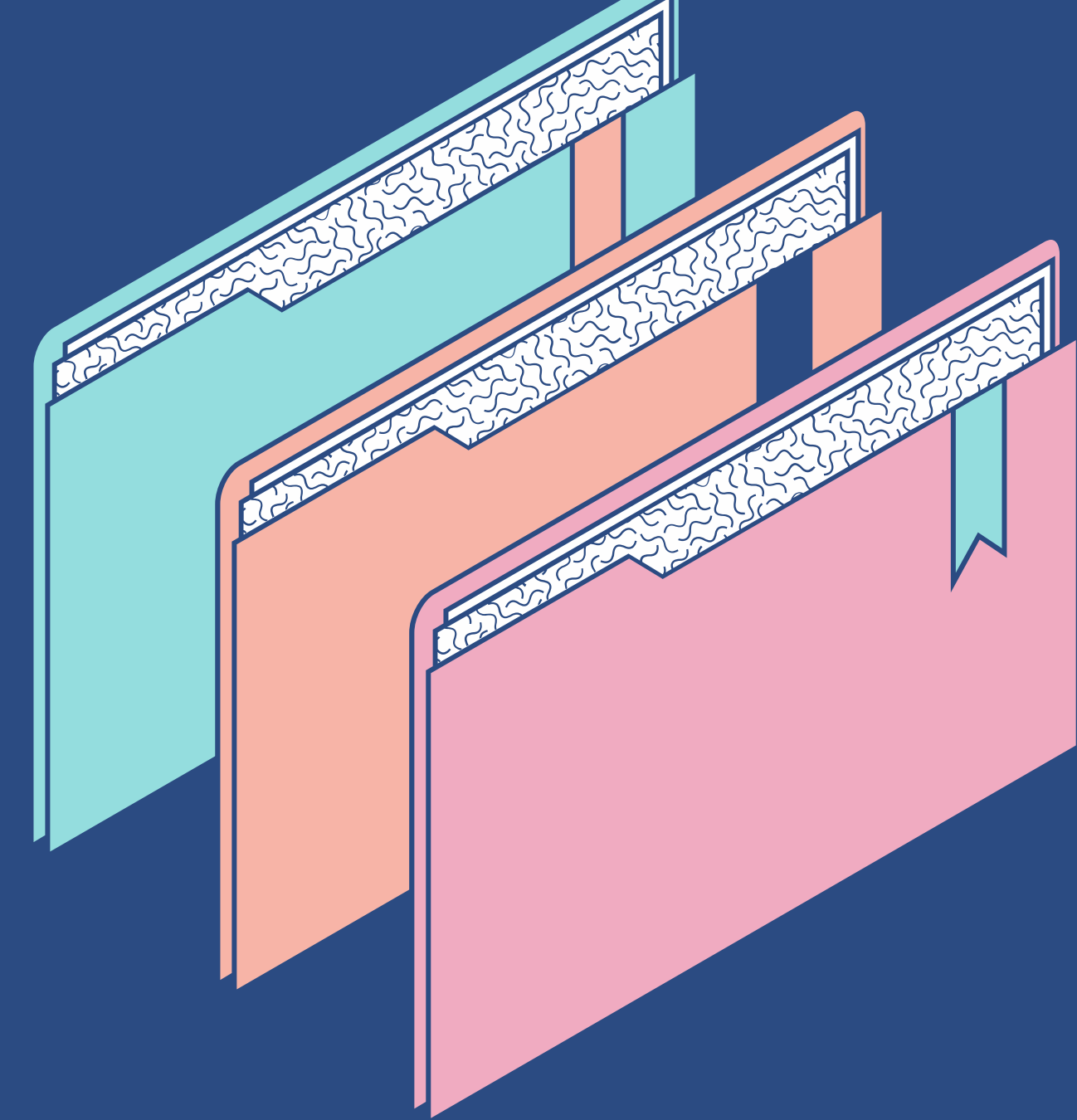
- Create Refurbishment Order
- Release Order & Print Papers
- Goods Receipt f Refurbishment Order



Course Content

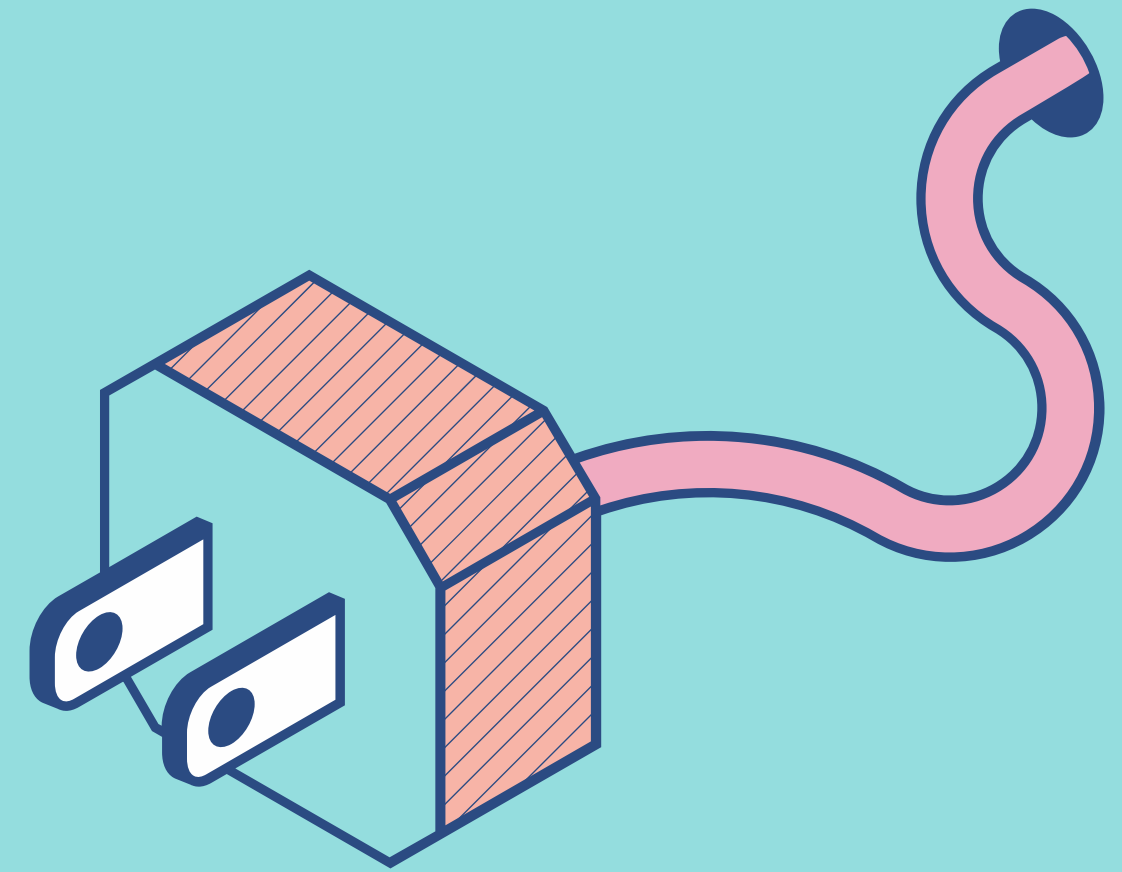
9- Reports

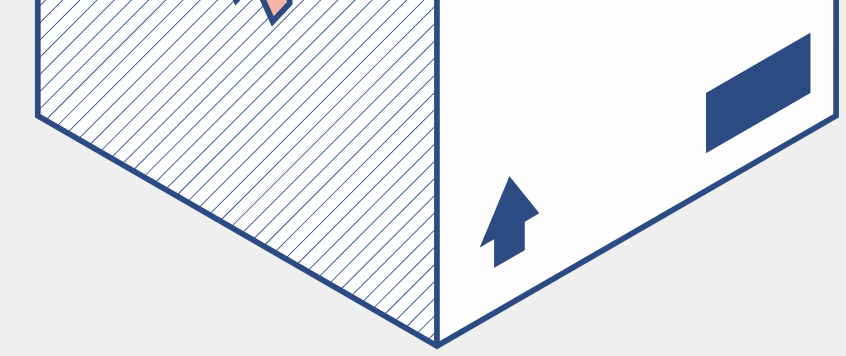
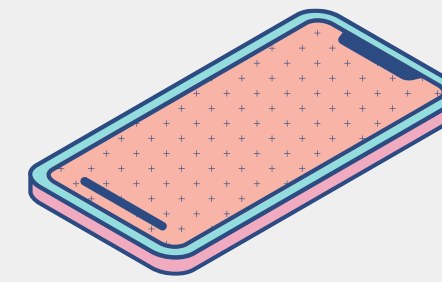
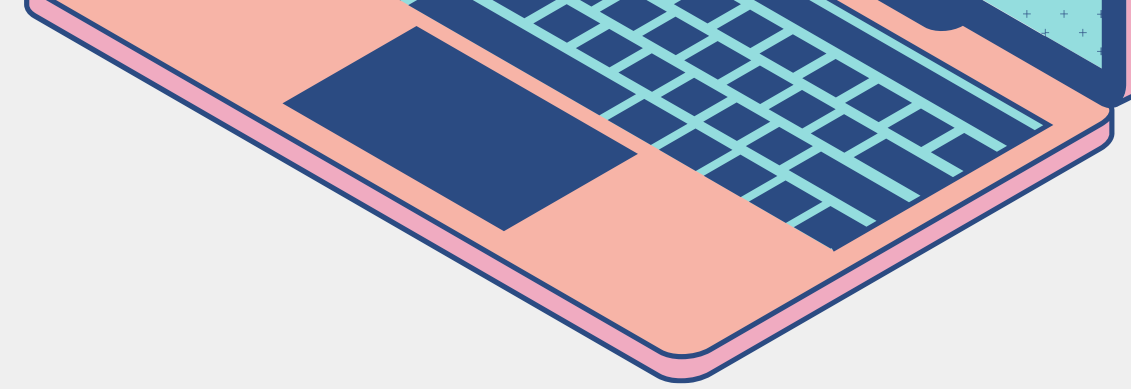
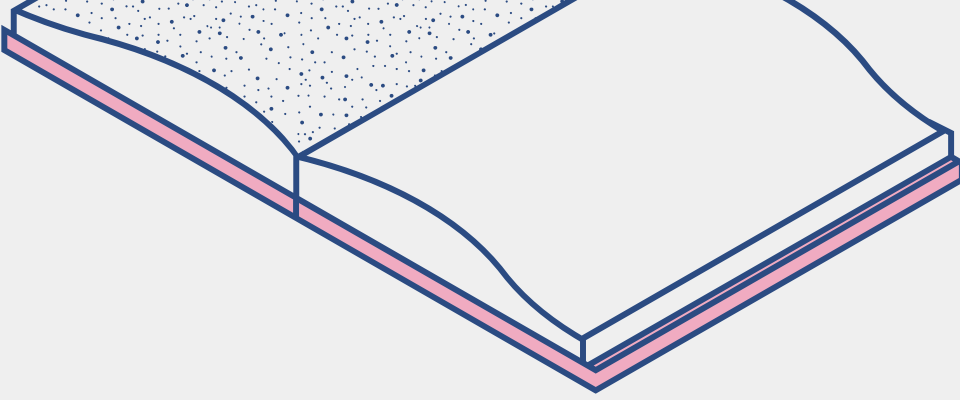
10- SAP Certified Application Associate -
SAP S/4HANA Asset Management with
solution



The Impact of the Course

- ➔ Perform the Role of PM Consultant
- ➔ Ability to self learning in SAP PM field





Course Requirements

- ➔ Basic knowledge on programming (preferred to know at least one coding language)
- ➔ SAP System ACCESS for practicing (will be available during the course)
- ➔ Computer connected with fair internet speed

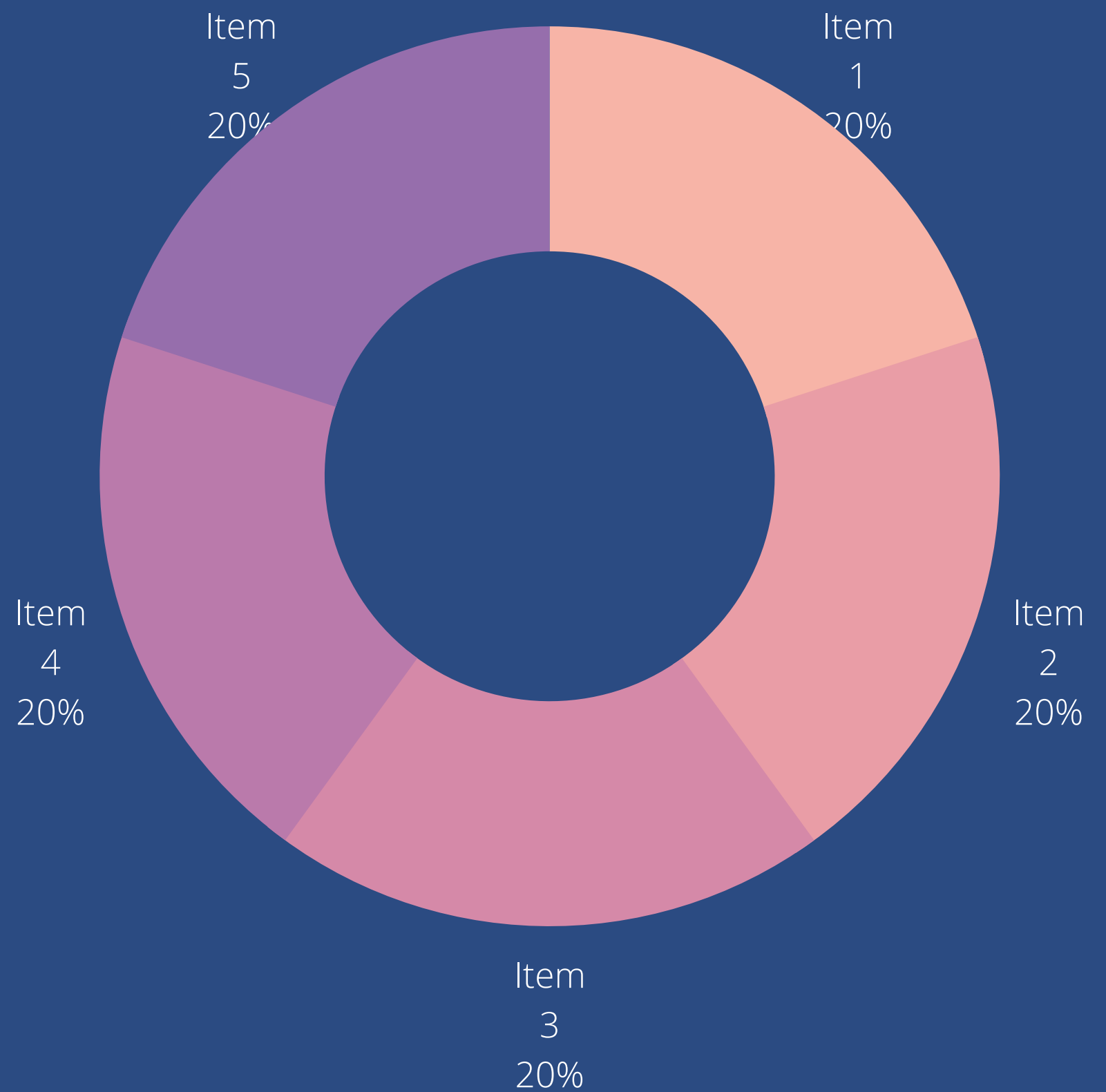
How about the online session steps

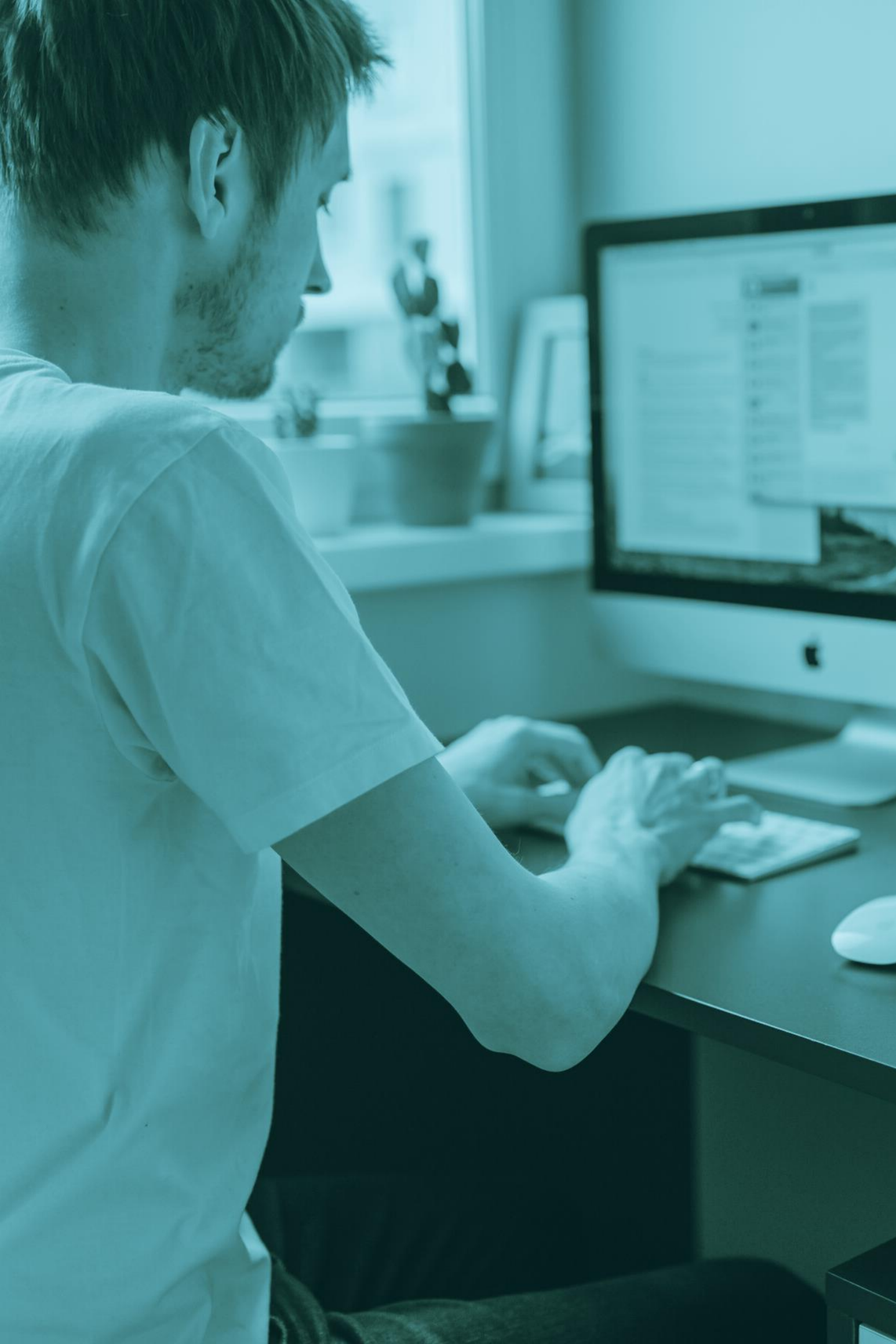


Virtual classroom adoption in the world

AS OF JANUARY 2021

Learning sessions are now conducted online in 95% of schools in the world.





الأكاديمية العربية للساب

WWW.ArabicSap.com